

State of Wyoming Corner Record

(In compliance with the *CORNER PERPETUATION AND FILING ACT*, Wyoming Statutes, 1997, Section 33-29-140, et. seq., and the Rules and Regulations of the Board of Registration for Professional Engineers and Professional Land Surveyors)

Reverse side of this form may be used if more space is needed.

Record of original survey and citation of source of historical information (if corner is lost or obliterated). Description of corner monumentation evidence found and/or monument and accessories established to perpetuate the location of this corner. Sketch of relative location of monument, accessories, and reference points with course and distance to adjacent corner(s) (if determined in this survey). Method and rationale for reestablishment of lost or obliterated corner.

G.L.O. Record: U.S. Deputy Surveyor, Edward D. Bright, Sept., 1868; 80.00 Chains ... This point coming in Road I set Boulder 12 x 10 x 8 for witness to cor to secs 8, 9, 16, & 17 1 Chain west of true cor.

Found: 13 ins. x 12 ins. x 6 ins. (10 ins. out of the ground), pink colored granite stone with a faint WC on the south face and three notches on the north face. Stone was approx. 25 ft. west of an old graded roadway.

Set: East at 66.00 feet of the above witness corner, I set 2 1/2 ins. diam. aluminum post, 30 ins. long, 24 ins. in the ground with a 3 1/4 ins. aluminum cap marked as noted below, for the true corner to Sections 8, 9, 16, and 17. Also buried a 1 x 1 x 2 ins. orange fluorescent magnetic module in the bottom of the monument hole, buried the original monument along the south edge of the remonumented corner point as a memorial and raised a small collar of stones around the monument. Set a steel fence post witness 1 ft. north.

Aluminum Cap Markings
T12N R67W

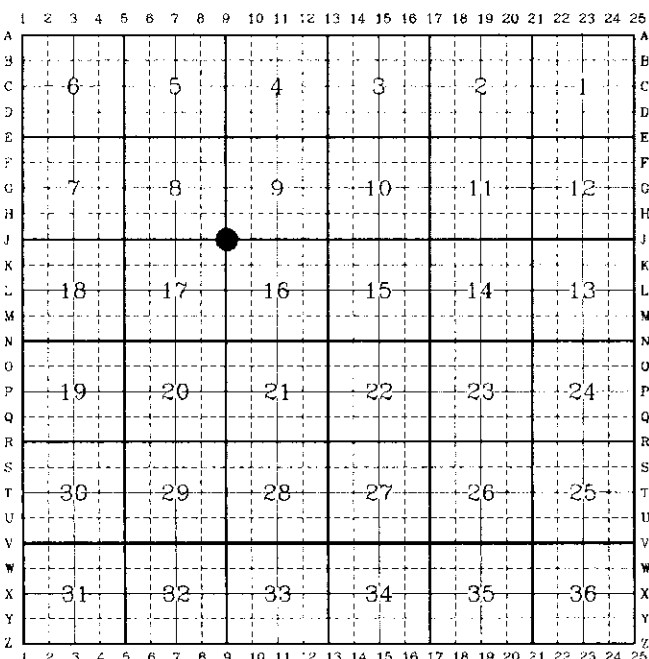
S 8	S 9
S 17	S 16

1999
P.L.S. 2927

See back of this sheet for measurements to other found or set monuments in the area.

Date of Field Work: Nov. 11, 1998, Jan. 6, 1999 Office Reference: A.V.I. Job No.:2-2085C

CROSS INDEX DIAGRAM

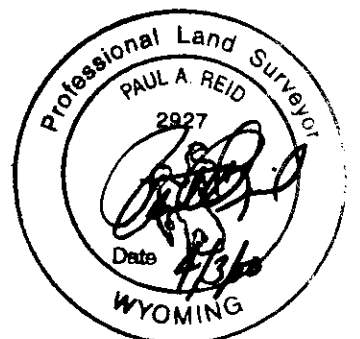


Firm/Agency, Address
 Paul A. Reid, P.L.S.
 A.V.I., p.c.
 2035 Westland Road
 Cheyenne, WY 82001

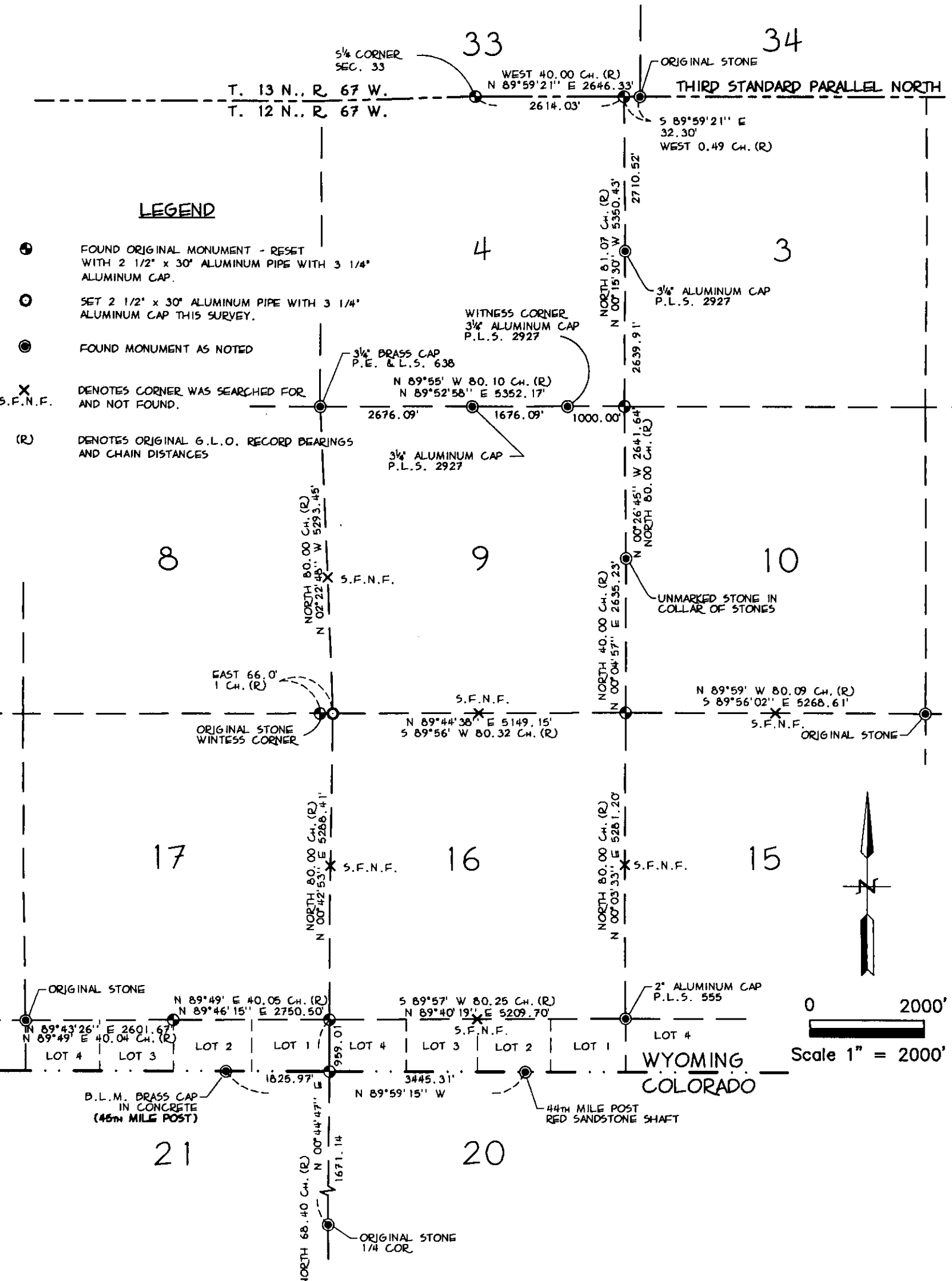
Telephone Number:
 (307) 637-6017

This corner record was prepared by me or under my direction and supervision.

SEAL & SIGNATURE



Corner Name: NW Section: 16 T.12N., R.67W.; 6th P.M. Cross-Index No.: J-9
 SBRPEPLS/PLSW: March 1994



LEGEND

- FOUND ORIGINAL MONUMENT - RESET WITH 2 1/2" x 30" ALUMINUM PIPE WITH 3 1/4" ALUMINUM CAP.
- SET 2 1/2" x 30" ALUMINUM PIPE WITH 3 1/4" ALUMINUM CAP THIS SURVEY.
- FOUND MONUMENT AS NOTED
- X DENOTES CORNER WAS SEARCHED FOR AND NOT FOUND.
- (R) DENOTES ORIGINAL G.L.O. RECORD BEARINGS AND CHAIN DISTANCES

SKETCH OF SURVEY
 T. 12 N., R. 67 W., 6TH P.M.
 LARAMIE COUNTY, WYOMING